



# The need for a moratorium on factory farming in Africa

**Dr. Victor YAMO,**

Farming Campaigns Manager,

Phone: +254 727 153574,

[VictorYamo@worldanimalprotection.org](mailto:VictorYamo@worldanimalprotection.org)



**World Animal Protection**



# Our vision

A world where animals  
live free from cruelty  
and suffering



Our

mission

We Move the World  
to protect animals



# Global Strategy 2021-2030



**Report:** <https://www.worldanimalprotection.or.ke/news/new-world-animals>



# OUR STRATEGIC VISION



© World Animal Protection

## GOAL 1

**ENSURE FARMED ANIMALS  
LIVE GOOD LIVES BY  
TRANSFORMING THE GLOBAL  
FOOD SYSTEM**



© Tree Tops

## GOAL 2

**STOP WILD ANIMALS BEING  
CRUELLY EXPLOITED AS  
COMMODITIES BY CHANGING  
THE SYSTEMS THAT ALLOW IT**

# Introduction

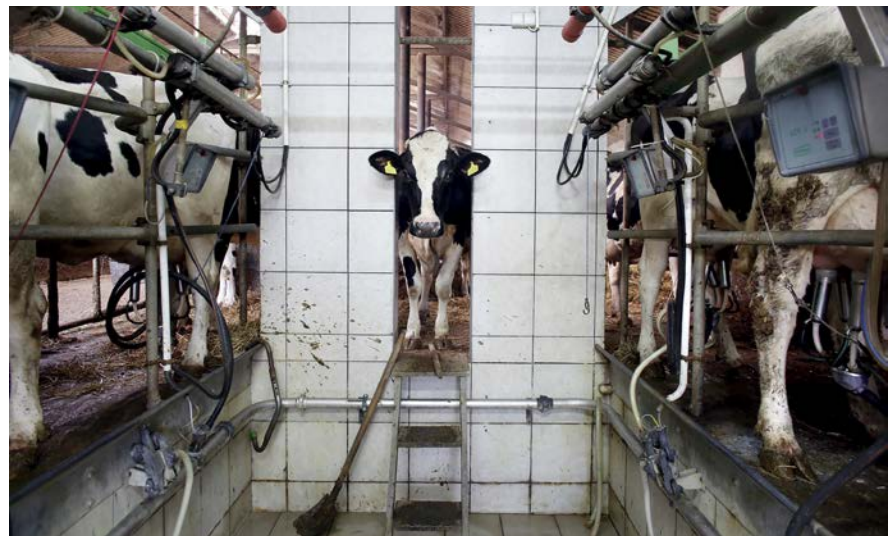




# Factory Farms



- ❑ A system in which many animals are raised in highly intensive methods, confined & overcrowded under very controlled conditions.
- ❑ Animal welfare and Sentience not recognized.
- ❑ **Goal** – Minimize costs and maximize profit, to quickly produce large supplies of meat at very low cost, all year round
- ❑ **Not sustainable**
  - Deforestation
  - Pesticide / Chemical use
  - Waste management
  - Antimicrobial Resistance

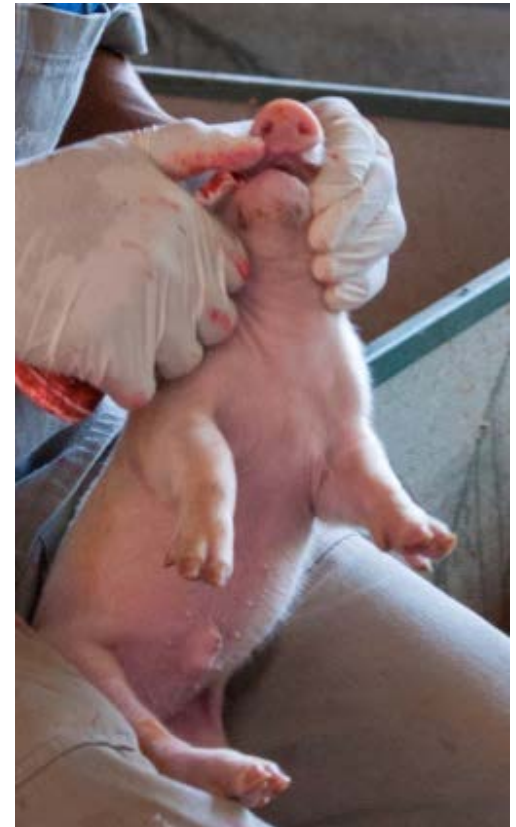




# Factory Farms



- ❑ Destructive, reliant on appalling animal suffering, worker hardships and misuse of the planet resources.
- ❑ Unacceptable practices include:
  - ❖ Close Confinement
  - ❖ Early Weaning
  - ❖ Barren Poorly Ventilated Environments
  - ❖ Routine Painful Mutilations
  - ❖ Fast growth rate



# Meat Production & Consumption



## Current Production (2018)

80 billion animals consumed globally

- ✓ 69 billion chicken
- ✓ 1.5 billion pigs
- ✓ 574 million sheep
- ✓ 479 million goats
- ✓ 302 million cattle

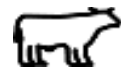
## Projected meat consumption growth by:

2030

- 30% Africa
- 18% Asia and Pacific
- 12% Latin America
- 9% North America
- 0.4% Europe

## Projected meat production growth by:

2030



5.9%



13.1%



17.8%



15.7%



# Impacts of Factory Farms



**Effects on  
public health**



**Biodiversity loss  
and pollution**



**Drives climate  
change**



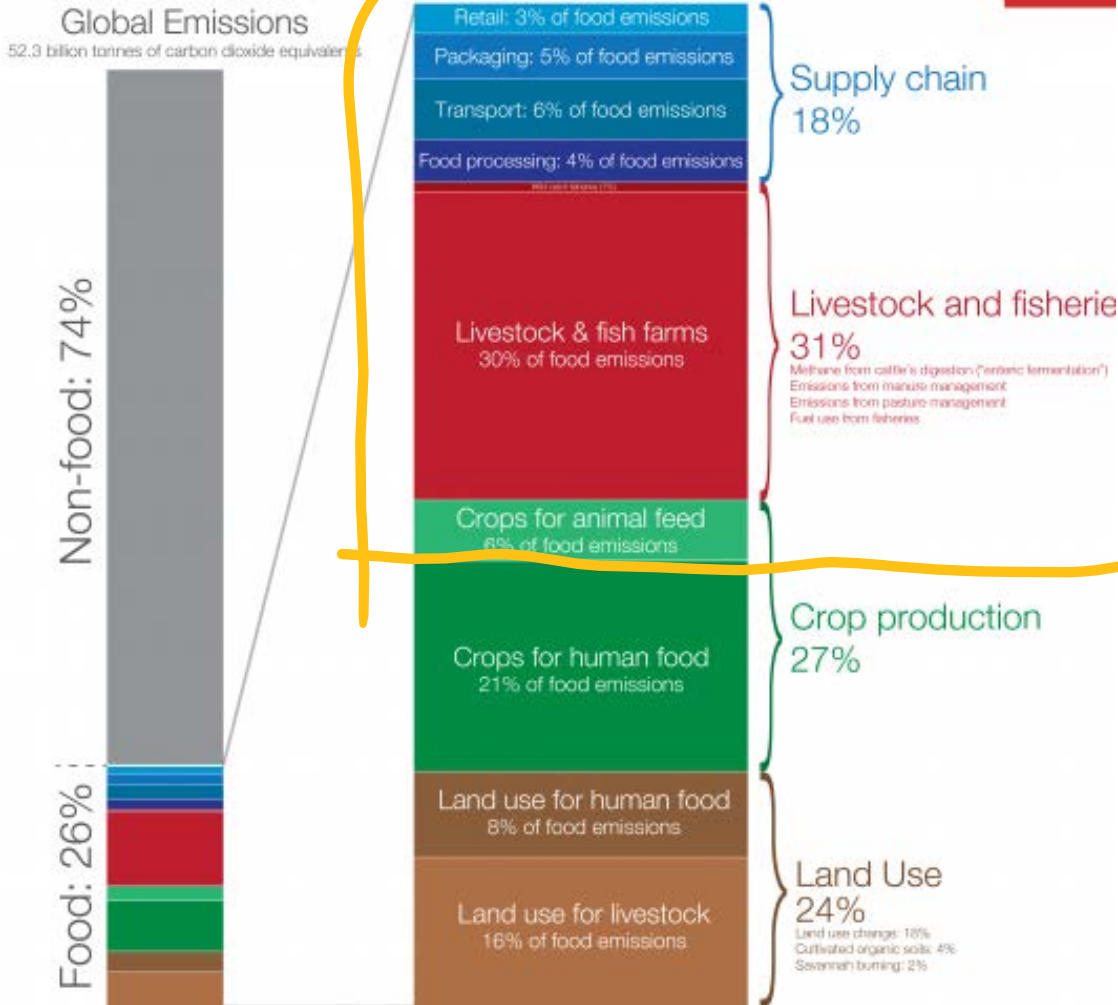
**Causes suffering to  
billions of animals**



**Undermines  
food security**



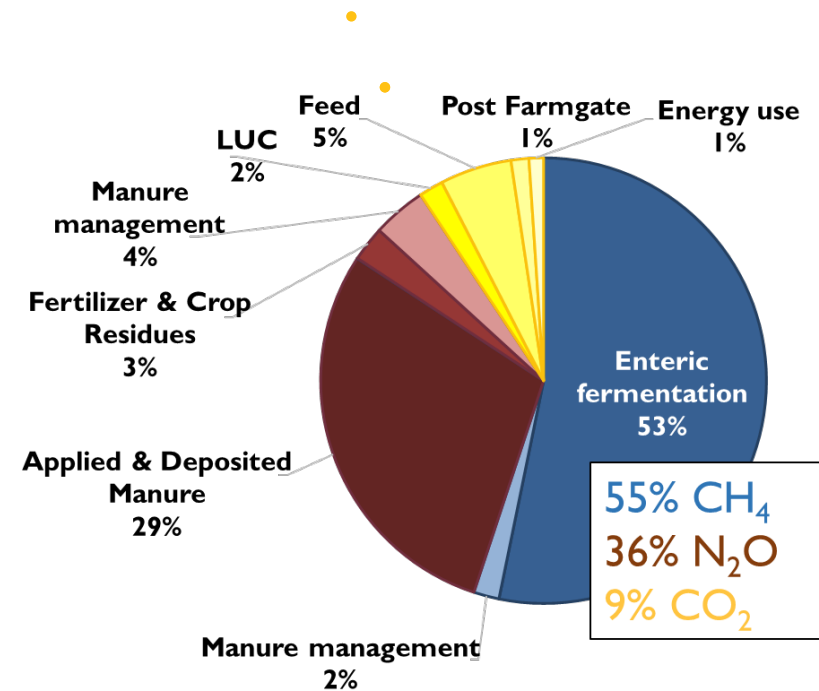
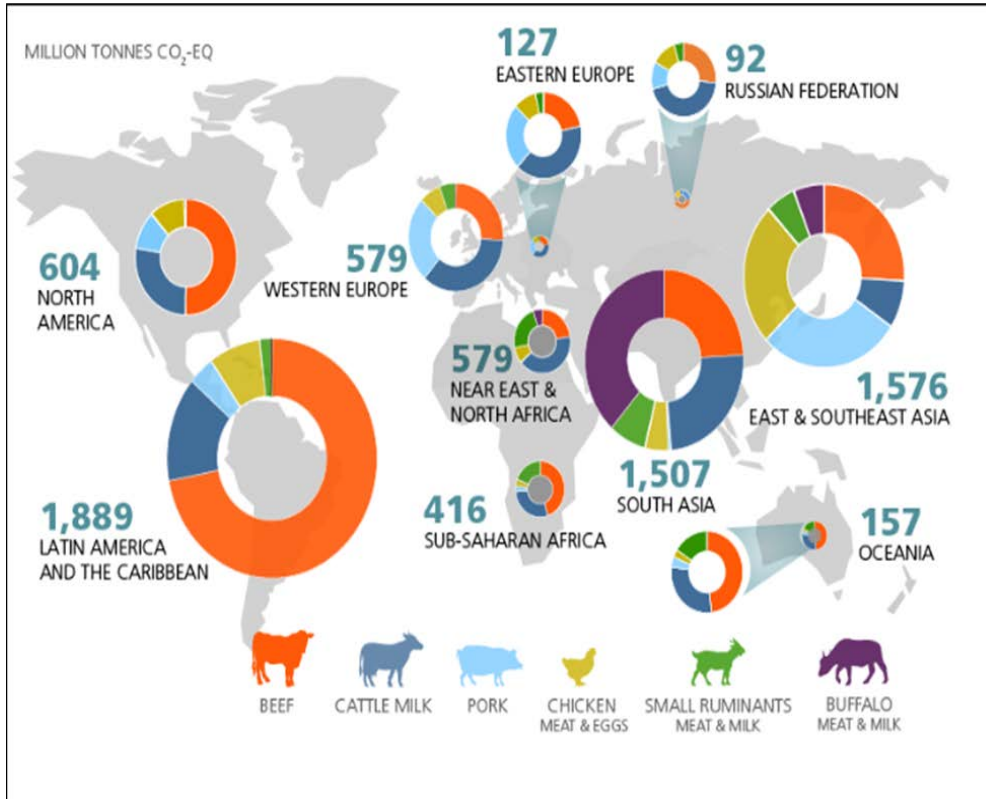
# 1. Climate change



- ❑ Food and Agriculture contribute about 26% of global human Green House Gases
- ❑ Major impact from Factory farming
- ❑ Factory farming = largest global source of methane and nitrous oxide



# 1. Climate change



Regional emissions by livestock commodities in <https://www.fao.org/gleam/results/en>

Green House Gas emission from Africa Livestock Value chain – Glem 2020

## 2. Environmental Contamination & Degradation



- ❑ Biggest climate change and environmental impacts of factory farming are caused by production for crops for **animal feeds**
- ❑ Drives **Deforestation** and Biodiversity loss



## 2. Environmental Contamination & Degradation



- ❑ Production of feed crops utilizes large quantities of water in regions already severe **water scarcity** = Not sustainable
- ❑ Production of feed crops **pollutes** water bodies that animals and people rely on with **fertilizers** and **pesticides**



## 2. Environmental Contamination & Degradation



- ❑ Using land to grow crops to feed animals that will become our food = Highly **inefficient** and destructive
  - For every **100 calories of crops** fed to farm animals = **only 17-30 calories reach humans**
  - Meat and Dairy provide only 18% of overall calories and 37% of proteins for humans but use 83% of farmland
- ❑ Better to grow crops for plant-based diets for direct human consumption
- ❑ Environmental contamination with **AMR Genes**

# What Can You Do



## □ Support our campaign for **Industry & Government** to



✓ Implement Farm Animal Responsible Minimum Standards (**FARMS**) as a minimum,

✓ Commit to a **moratorium** on factory farming within National Climate actions plans (known as Nationally Determined Contributions (NDCs) in recognition of factory farming's climate impact

✓ Shift to **regenerative** and **agroecological** production systems

